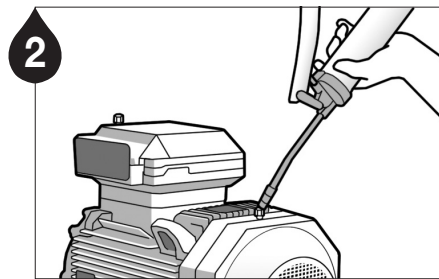
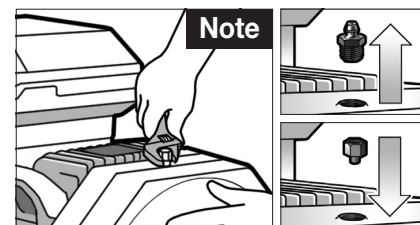


1 Remove contaminants around the lube point.



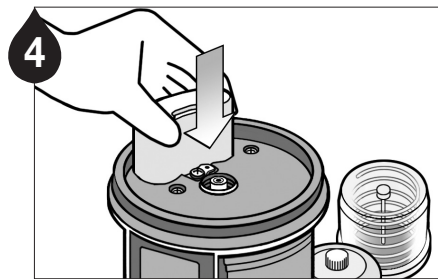
2 Ensure a clear passage using a manual grease gun. **Note1** Remove any hardened grease by purging the lube point with a manual grease gun. **Note2** The grease in the equipment and the grease contained in the unit should be the same or compatible.



5 Remove the grease nipple and install appropriate adaptors.



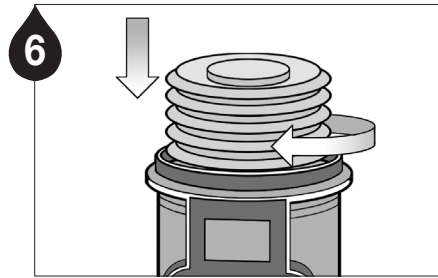
3 Check the grease pouch capacity and the service pack items (battery pack, grease pouch & dust cover).



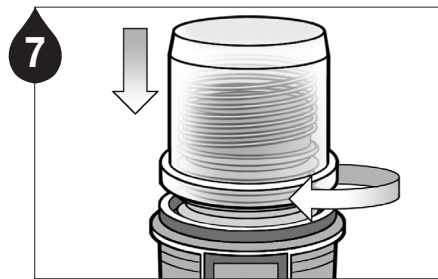
4 Insert battery pack.



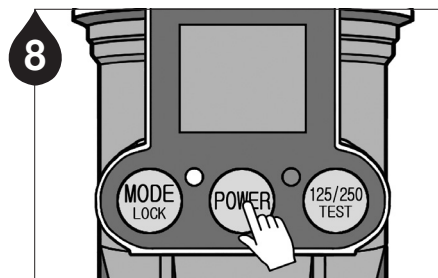
5 Purge the grease pouch until grease comes out of the tip.



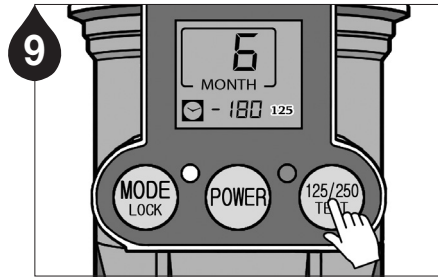
6 Carefully screw the grease pouch in by turning clockwise. Do not over tighten.



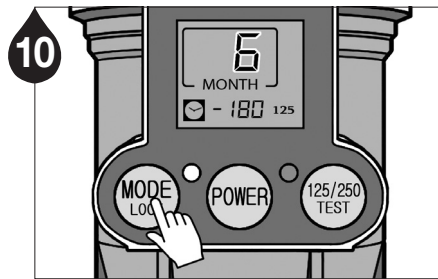
7 Refit the top housing on the unit and turn clockwise until it clicks.



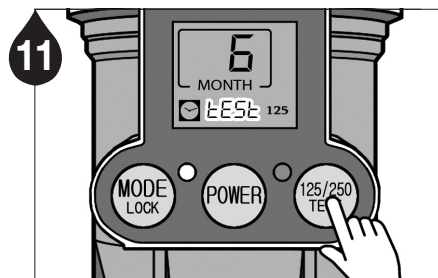
8 Press the POWER button for 2 seconds to turn the unit on.



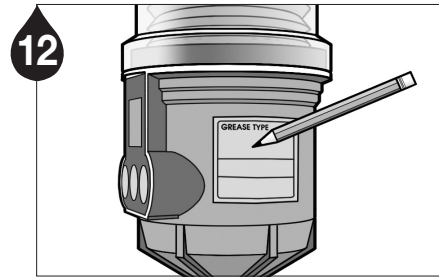
9 Select the appropriate grease pouch capacity by pressing the 125/250/TEST button.



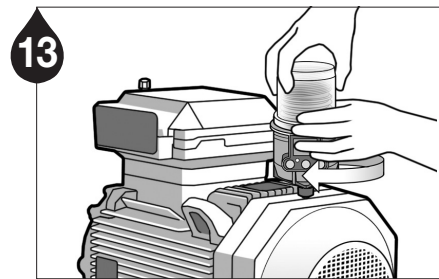
10 Press the MODE button to program the dispensing period.



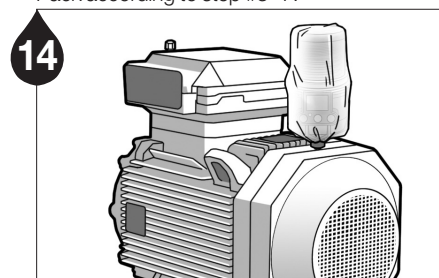
11 Press the TEST button for 2 seconds to run a test cycle and check for proper operation of the unit.



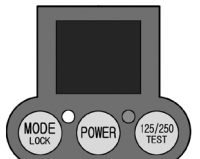
12 Note the installation date and the scheduled completion date of lube cycle on the lubricator using the label provided in the Service Pack for maintenance purposes.



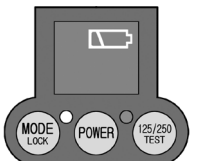
13 Install the Lubri-Cup EM unit on the lube point. When the selected dispensing period has completed, replace the unit with the Service Pack according to step #3~7.



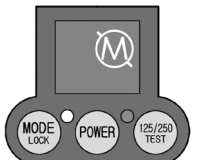
14 Install the dust cover over the lubricator for added protection.



Symptom: Blank LCD screen
Possible Cause: Electrical malfunction of CPU or circuitry, battery problem
Solution: Replace battery pack or press reset button to restart the lubricator. If the problem persists, contact your supplier.



Symptom: Low Battery Indication
Possible Cause: Rapid power consumption due to improper storage or harsh operating conditions (temperature, humidity, or high backpressure).
Remedy: Store the battery pack in cool, dry place and choose proper battery type for application. Optional lithium battery pack is available for more advanced applications.



Symptom: Excessive Backpressure Indication
Possible Cause: Excessive backpressure due to hardened grease, over-lubrication, ruptured lube line, long distance remote installation, etc.
Solution: A) Check backpressure at lube point and/or lube line, B) check grease dispensing rate, C) reduce remote installation distance, or D) use manual grease gun to clear blockage.

LCD Functions

MODE LOCK

Selecting the dispensing period
Deactivate 'Automatic Lock Out' mode by pressing the button for 2~3 seconds

POWER

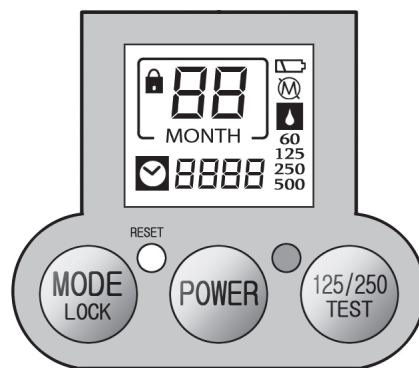
Power **ON/OFF**
Press the button for 2 seconds to turn unit **on** or **off**

125/250 TEST

For 125ml/250ml unit
A) Press the button to select 125ml or 250ml capacity **B)** Hold the button for 2 seconds to run a test cycle
**A quick press of the button will stop the test cycle mode*

TEST

For 60ml/500ml unit
Press the button for 2 seconds to run a test cycle

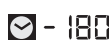


RESET Reset the unit when the unit malfunctions and/or after changing the Service Pack

LCD Displays



The dispensing period setting



The # of days remaining until the end of lube cycle



The unit is in "Automatic Lock Out" mode



Selected grease pouch capacity (default setting: 125ml)



Grease capacity



The test mode is activated



The # of days after dispensing has completed



The # of days after the unit has stopped dispensing due to excessive backpressure



Low battery power



Excessive backpressure indication



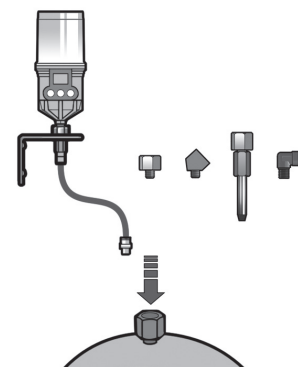
Empty grease level



Signal lamp blinks periodically when battery power is low, excessive backpressure exists, or if grease level is empty

ISO9001/14001 CE

Mounting Methods

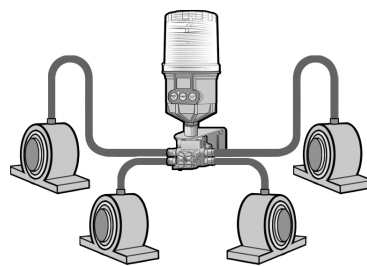


Single Point Installation

Direct Mount or Remote Installation using Extension Tube

Direct mount is always preferable. For applications not allowing any direct mounts, remotely mount the unit using appropriate accessories and keep the distance from the lube point as short as possible.

For remote installation using a tube, use a 6mm O.D. (1/4") tubing pre-filled with the same or compatible grease as the grease contained in the unit.



Multi-Point Installation

Multi-Point Remote Installation using Progressive Divider Block (2~8 Points)

Remote multi-point lubrication is available with the Lubri-Cup EM using a divider block. It is recommended to test the back pressure of the bearing, lube lines, and divider block after assembly using a grease gun connected to a pressure gauge. Ensure the break-off pressure is below the average operating pressure of 30kgf/cm² (425psi).

Warning

A cross bridge must be used in order to combine two ports into one on the divider block.

- ▶ Do not plug any open ports on the divider block.
- ▶ Use the lithium battery pack for specific applications such as: extremely cold/high temperatures, high backpressure, or multi-point lubrication with use of a divider block.
- ▶ For remote installation, keep the maximum distance at 6m (20ft) or less.

Shelf life and Warranty Product Warranty is limited to original defects in material and workmanship and will not cover any collateral damage due to mishandling, abuse and /or any other inappropriate use of this product.

Rev.02



A.W. Chesterton Company
860 Salem Street, Groveland, MA 01834, USA
www.chesterton.com



User Manual

LUBRI-CUP™ EM

Series (125 & 250ml / 500ml)

